

Travis County Emergency Management Office  
 5010 Old Manor Rd, Austin TX 78723  
 \* Pete Baldwin, Emergency Management Coordinator  
 Office: 974-0472  
 \* Stacy Moore, Assistant Emergency Management Coordinator  
 Office: 974-0473  
 \* Tanner Hunt, Emergency Planner/Homeland Security Coordinator  
 Office: 974-0474

**Legend**

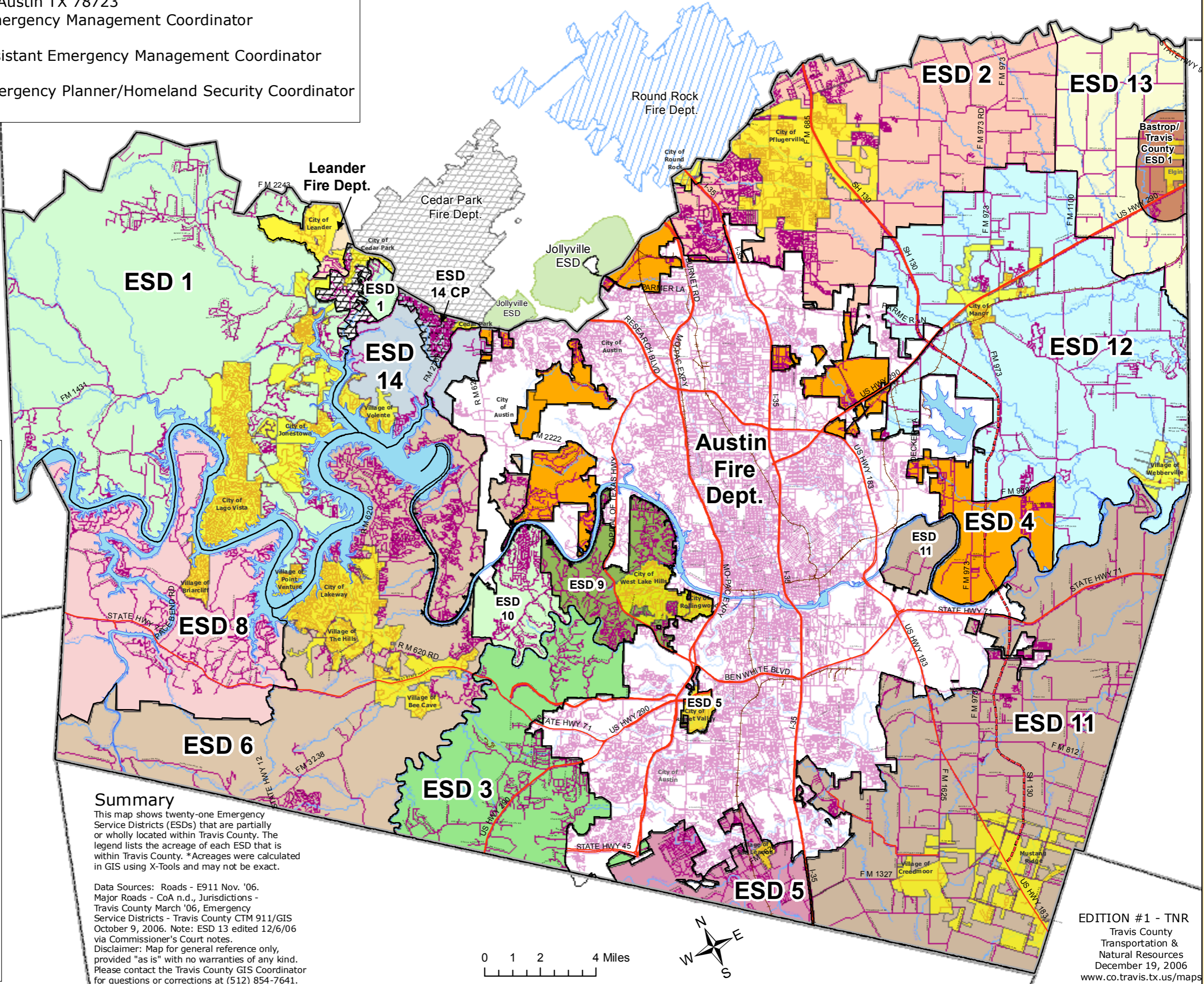
**Municipal Jurisdiction**

**Emergency Service District acreage in Travis County\***

- Austin Fire Dept. (154,393 ac.)
- Bastrop/TC ESD 1 (4,157 ac.)
- Leander Fire Dept. (2,941 ac.)
- ESD 1 (89,952 ac.)
- ESD 2 (49,646 ac.)
- ESD 3 (26,482 ac.)
- ESD 4 (22,645 ac.)
- ESD 5 (10,128 ac.)
- ESD 6 (66,224 ac.)
- ESD 8 (37,344 ac.)
- ESD 9 (10,527 ac.)
- ESD 10 (6,189 ac.)
- ESD 11 (77,091 ac.)
- ESD 12 (63,610 ac.)
- ESD 13 (19,525 ac.)
- ESD 14 (10,175 ac.)
- Cedar Park Fire Dept. (2,164 ac.)
- Cedar Pk. cntrct. w/ESD14 (1,677)
- Jollyville ESD (3 ac.)
- Round Rock Fire Dept. (444 ac.)

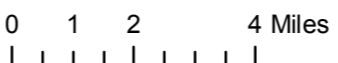
**Major Road**

- Interstate or Freeway
- US or State Highway
- Railroad
- Creek
- Water Body



**Summary**  
 This map shows twenty-one Emergency Service Districts (ESDs) that are partially or wholly located within Travis County. The legend lists the acreage of each ESD that is within Travis County. \*Acreages were calculated in GIS using X-Tools and may not be exact.

Data Sources: Roads - E911 Nov. '06.  
 Major Roads - CoA n.d., Jurisdictions - Travis County March '06, Emergency Service Districts - Travis County CTM 911/GIS October 9, 2006. Note: ESD 13 edited 12/6/06 via Commissioner's Court notes.  
 Disclaimer: Map for general reference only, provided "as is" with no warranties of any kind. Please contact the Travis County GIS Coordinator for questions or corrections at (512) 854-7641.



EDITION #1 - TNR  
 Travis County  
 Transportation &  
 Natural Resources  
 December 19, 2006  
[www.co.travis.tx.us/maps](http://www.co.travis.tx.us/maps)

Texas State Plane Central Zone 4203

# Emergency Service Districts in Travis County

