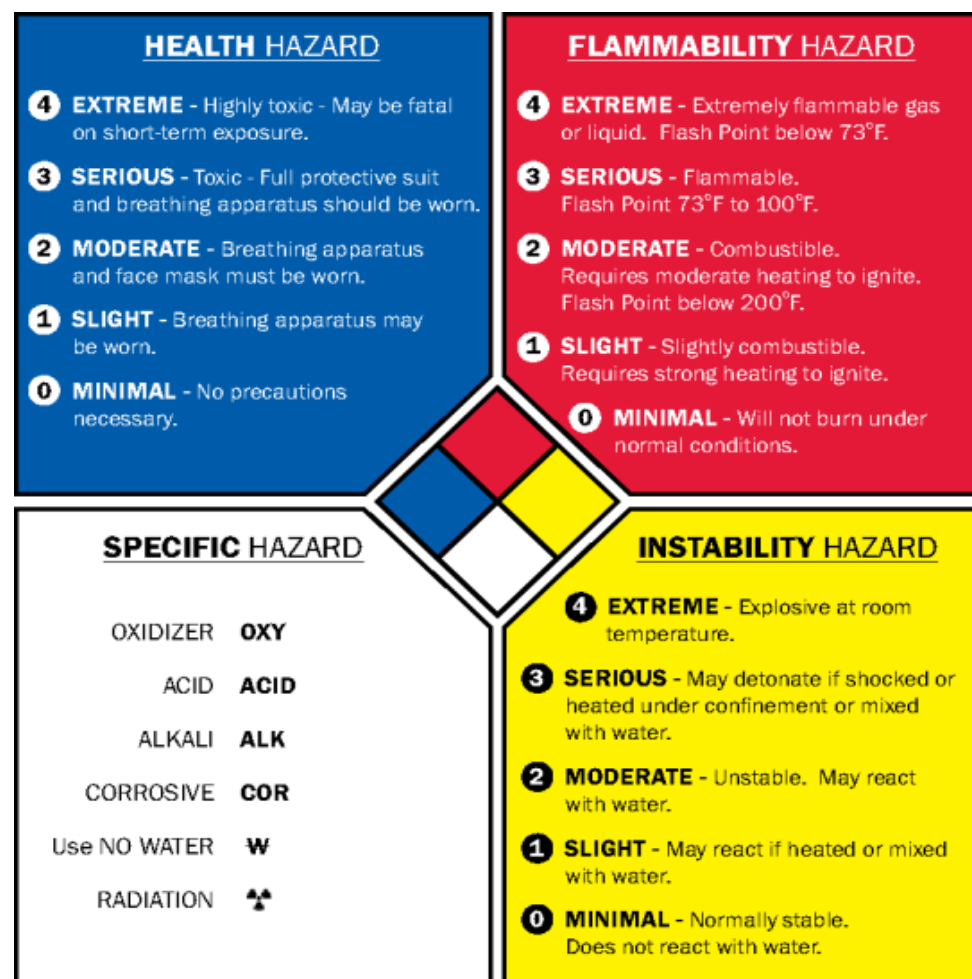


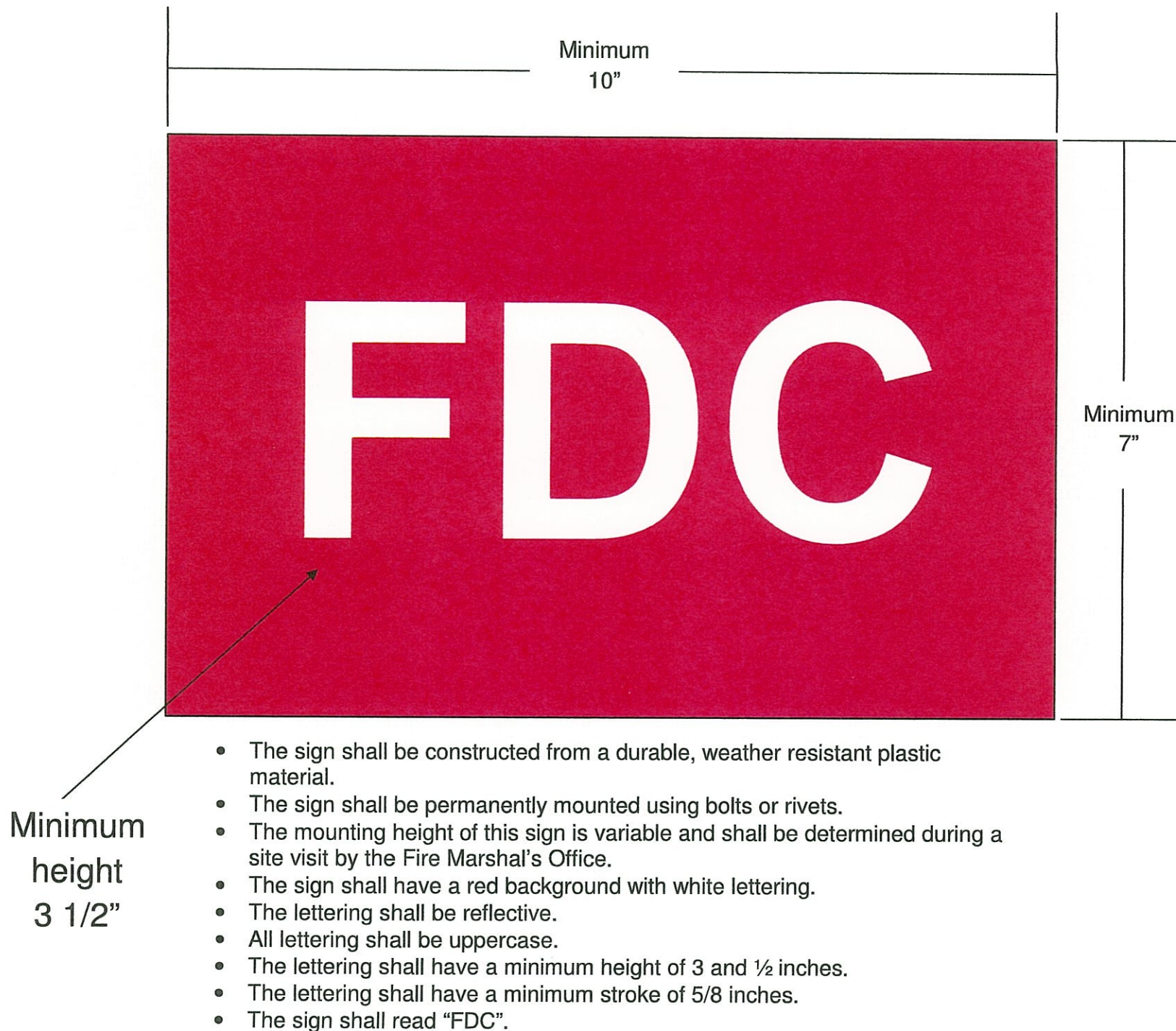
704 Placards

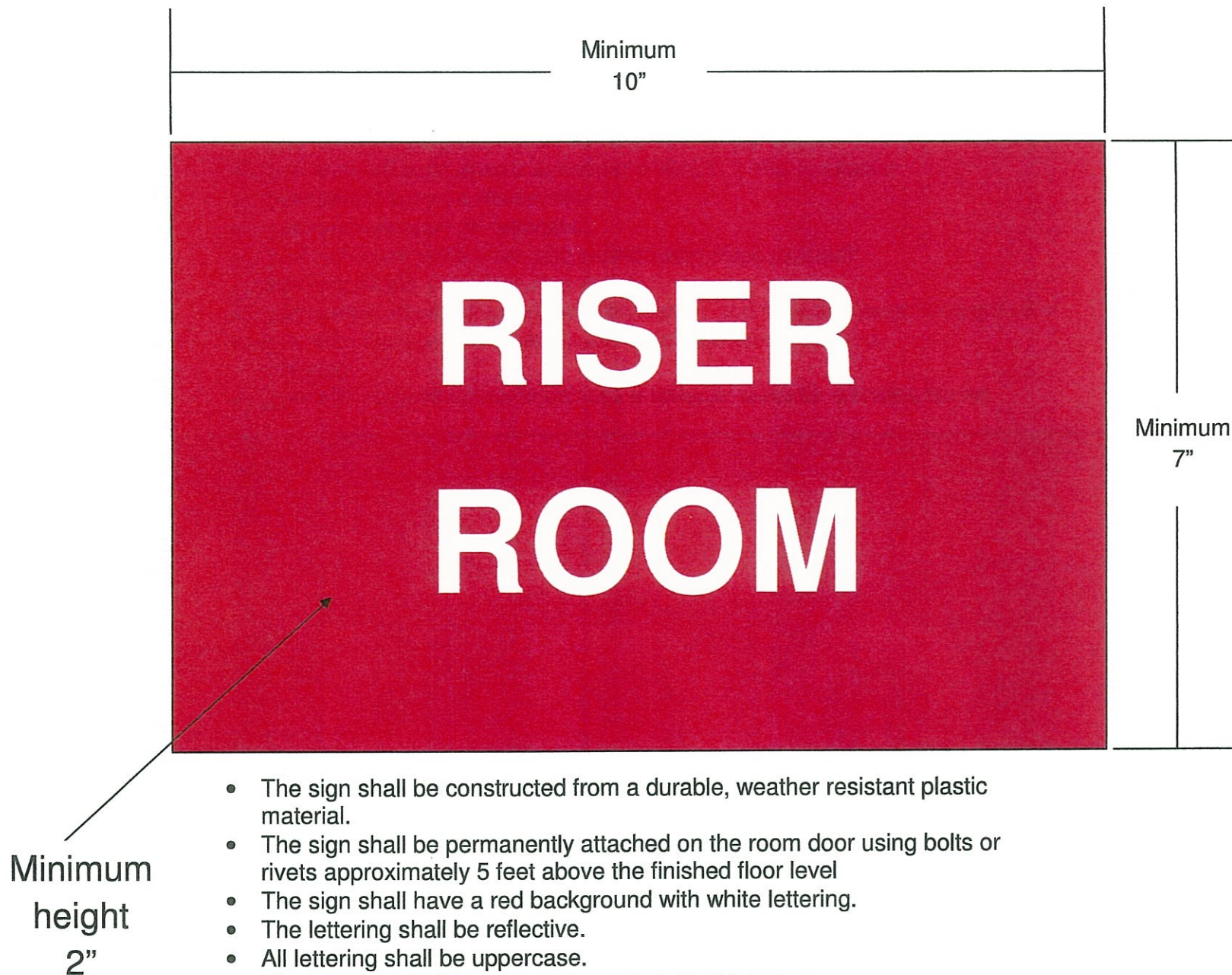
Section 4.3 of NFPA 704 provides guidance on locations for posting this placard(s).

This placard must be posted for any areas that potentially hazardous materials will be stored, such as the maintenance room and any area containing pool chemicals. This placard is meant to provide quick hazard information for emergency responders. It should be visible in case of an emergency where the responders are likely to enter. If there are numerous areas where the responders could enter the facility, there should be numerous placards. The placement and quantity should be decided using a facility's best judgment coupled with the advice from Travis County ESD2. At a minimum, the placard should be posted on the two exterior walls of a facility or building, each access to a room or area, or each principal means of access to an exterior storage area.



RATING NUMBER	AMOUNT REQUIRING OUTSIDE PLACARDING ON A BUILDING OR AREA WITHIN A FACILITY
HEALTH	
4	Any amount
3	Any amount
2	More than 100 lbs or 10 gals. Or 50 cu. ft. (aggregate totals of weight or volume)
1	More than 500 lbs or 55 gals. Or 200 cu. ft. (aggregate totals of weight or volume)
FLAMMABILITY	
4	More than 1 lb or 1 gal. or 50 cu. ft. (aggregate totals of weight or volume)
3	More than 100 lbs or 10 gal. or 50 cu. ft. (aggregate totals of weight or volume)
2	More than 500 lbs or 55gals. or 1000 cu. ft. (aggregate totals of weight or volume)
1	More than 1000 lbs or 110 gals or 2000 cu. ft. (aggregate totals of weight or volume)
REACTIVITY	
4	More than 10 lbs or 5 gals or 10 cu. ft. (aggregate totals of weight or volume)
3	More than 10 lbs or 5 gals or 50 cu. ft. (aggregate totals of weight or volume)
2	More than 100 lbs or 55 gals or 200 cu. ft. (aggregate totals of weight or volume)
1	More than 100 lbs or 55 gals or 1000 cu. ft. (aggregate totals of weight or volume)





- The sign shall be constructed from a durable, weather resistant plastic material.
- The sign shall be permanently attached on the room door using bolts or rivets approximately 5 feet above the finished floor level
- The sign shall have a red background with white lettering.
- The lettering shall be reflective.
- All lettering shall be uppercase.
- The lettering shall have a minimum height of 2 inches.
- The lettering shall have a minimum stroke of 1/2 inch.
- The sign shall read "RISER ROOM".



- The sign shall be constructed from a durable, weather resistant plastic material.
- The sign shall be permanently mounted using bolts or rivets. If mounted indoors, an adhesive glue would be acceptable.
- The mounting height of this sign is variable and shall be determined during a site visit by the Fire Marshal's Office.
- The sign shall have a red background with white lettering.
- The lettering shall be reflective.
- All lettering shall be uppercase.

