



TRAVIS COUNTY EMERGENCY SERVICES DISTRICT NO. 2

# CHASING GROWTH AND KEEPING IT AFFORDABLE

We are Travis County Emergency Services District No. 2 (ESD No. 2), your local fire department, and we are proud to serve you with high quality services that are delivered in efficient, effective, and professional ways. When you need us, we will be there...because we care!

We are sending this letter as a standard practice of full transparency on how your tax dollars are spent, and in response to our multi-year planning process that guides us so we stay ahead of the population growth curve, as best we can.



*(The above picture is a recent graduating class, Class 31, that began as civilians and graduated from our EMS and fire academies)*

To learn more, please visit  
[www.pflugervillefire.org](http://www.pflugervillefire.org)



**About ESD No. 2 (commonly referred to as the Pflugerville Fire Department, but separate from the City of Pflugerville)**

Travis County ESD No. 2 is an ISO Class 1 fire department, the highest level Public Protection Classification rating a fire department can receive according to the Insurance Service Organization (ISO), which is an independent organization that evaluates fire departments across the United States. We are honored to be one of the approximately 400 fire departments in the nation that hold this rating, and one of only approximately 70 fire departments in the state of Texas to be designated an ISO Class 1 fire department.

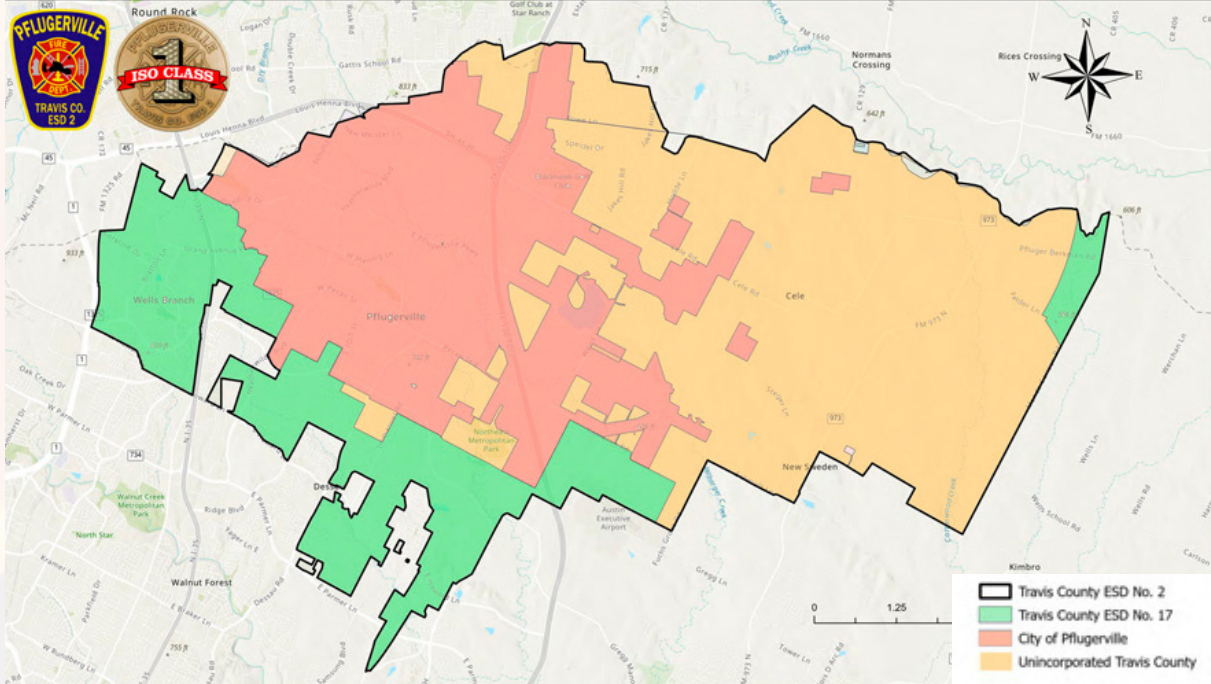
ESD No. 2 was established to provide fire protection services in our designated portion of northeast Travis County and the taxes we collect are to support those fire protection services. This topic will be important as we discuss other non-fire protection services that are provided through ESD No. 2 later in this document.

With a 23% increase in calls for service between 2020 and 2021, maintaining this rating is difficult in its own right, but maintaining our service levels during periods of exponential growth is that much harder. Some of the big steps ESD No. 2 is taking to address growth and service demand in community include:

- Construction of fire station #6 at 17221 Weiss Ln, on land contributed by one of our valued partners, the Pflugerville Independent School District, helping make this new station a reality and saving taxpayer dollars in the process.
- Construction of fire station #7 and updating our training facility co-located at 18412 Cameron Rd. To meet your potential needs, a temporary fire station has recently been erected and is in service while the permanent one is being built.
- Station #6 and #7 will address the rapid growth and service demand occurring in Northeast Travis County, including within the city of Pflugerville.
- The opening of station #8, an ALS/Ambulance EMS facility at 2021 Crystal Bend, again in partnership with the Pflugerville Independent School District, to address the rapidly growing areas in Northtown Municipal Utility District and communities along Dessau Rd.
- The creation of a community-based firefighter/emergency medical technician cadet training and hiring program. This program provides effective recruitment and retention of a group of highly qualified employees who reflect the diversity of the community we serve. The group photo at the beginning of this document is from July 2022, and was the first graduating class from our community-based program.

The initiatives listed above are just a few examples of how we use your taxpayer dollars to provide you and those you love with quality care when you need us the most. While we continue to work with the City of Pflugerville and explore the necessary funding options for ALS and Ambulance services, ESD No. 2 remains committed to providing exceptional and life saving services to our community.





## **Travis County ESD No. 2, ESD No.17, City of Pflugerville ETJ, ALS, BLS, EMT, First Response - What does it all mean?**

In September of 2022, ESD No. 2 and Travis County Emergency Services District No. 17 (ESD No. 17) proposed a policy that would lower or, in most cases, eliminate the resident cost burden when utilizing Advanced Life Support (ALS) and/or ambulance services for residents in ESD No. 17. This is just one benefit of having dedicated property tax dollars funding ALS and ambulance services.

We know this can be confusing, so what does all this mean for you? There are differences depending on where you live within the overall boundaries of ESD No. 2. Listed below are additional explanations about the services we provide and your possible financial obligations after we provide these services. The sections below make references to the color-coded map that is located above this section.

### **Residents of ESD No. 2**

ESD No.2 is represented by all the colored sections in the map above; fire protection services and a minimum of Basic Life Support (BLS) first response EMS services are provided in all areas within the borders and are funded by ESD No.2 tax collections. These services will be provided by firefighter/Emergency Medical Technicians (EMT's) and arrive on firetrucks.

ESD No.2 has adopted a property tax rate of .08 cents per \$100 of assessed property value, an increase of just \$2 total for the year for taxpayers. This is approximately \$23 per month, or \$278 annually for the average taxable home value in Travis County.

### **Residents of ESD No. 17**

ESD No. 17 is represented by the green section on the map above and receives additional services beyond those provided to all parts of ESD No. 2. ESD No.17 exists within the boundaries of ESD No. 2, but ESD No. 17 is another layer of coverage and was established to provide Advanced Life Support (ALS) first response and ambulance transport services.

ESD No. 17 has adopted a property tax rate of .0245 cents per \$100 of assessed property value, a reduction from last year for taxpayers. This is approximately \$7 per month, or \$85 annually for average taxable home value in Travis County.

### **Residents of ESD No. 17 (continued)**

Residents in ESD No. 17 will receive ALS transport services from ALS ambulances that are owned and operated by ESD No.2 and staffed with ESD No.2 firefighter EMTs and paramedics. Because these residents pay additional, dedicated taxes for these enhanced ALS services, they will not receive patient billing outside of their insurance or medicare coverage.

Residents within ESD No. 17 receive combined services from ESD No. 17 and ESD No. 2, and receive the highest levels of both fire and ALS/ambulance transport services for just under a combined total of 11 cents per \$100 of assessed property value. This is approximately \$30 per month, or \$363 annually for average taxable home value in Travis County for both fire and EMS services.

### **Residents of City of Pflugerville Extra Territorial Jurisdiction (ETJ)**

The City of Pflugerville ETJ is represented by the orange regions on the map above. Through a partnership with Travis County, residents of the ETJ will receive first responder medical service, ALS first response, and ALS ambulance transport services from ESD No. 2, and are subject to patient billing like the rest of Travis County residents for these services. For clarity, City of Pflugerville ETJ residents will receive ALS transport services from ALS ambulances that are owned and operated by ESD No.2 and staffed with ESD No.2 firefighter EMTs and paramedics.

### **Residents in the City of Pflugerville**

The City of Pflugerville boundaries are represented by the red regions on the map above. Residents in the City of Pflugerville receive fire and first responder medical coverage from firefighter/EMTs on fire trucks.

ALS and Ambulance transport services were provided by ESD No. 2 from 2017-2021, utilizing ESD No. 2's tax collections that were collected for fire protection coverage. This was required due to the community's strong and acute need to expand ALS and Ambulance transport services, based on regional growth, and with the understanding that additional funding would be required to sustain this significant new service.

ESD No.2's ALS first response and ambulance transport services are not available for residents in the City of Pflugerville based on no available funding to ESD No.2 for the additional service. As mentioned previously in this document, ESD No.2's ALS first response and ambulance transport services are available in both ESD No. 17 and the City of Pflugerville's ETJ. These ALS first response and ambulance transport services are funded by additional tax collections from ESD No. 17's area and Travis County's funding for the City of Pflugerville's ETJ.

In January of 2022, the ALS ambulance transport service chosen by the City of Pflugerville was Acadian, but that contract was canceled approximately 6 months after it began. The City of Pflugerville now contracts with Allegiance, another for-profit EMS provider. This means that after insurance and/or medicare coverage, that you may receive a medical bill consistent with for-profit EMS billing practices. You may also be subject to for-profit EMS bill collection practices.